

# TEC



**MA-1595**  
High Quality LAN ECR

# B

# uilt-in LAN Communications

MA-1595

ELECTRONIC CASH REGISTER

## Standard Scanning Interface

- Mix and Match
- Hi-cone
- Source code and in-store code
- Price read key
- Add PLU function
- Up to 65,000 items

## Standard EFT Interface

- Credit Card Authorization
- Debit Card Authorization with "PIN" pad
- ECR printer is used for voucher print (U.S. only)
- EBT Food Stamps
- EBT Cash
- Check Verification (MICR/Driver's License)



## Standard Scale Interface

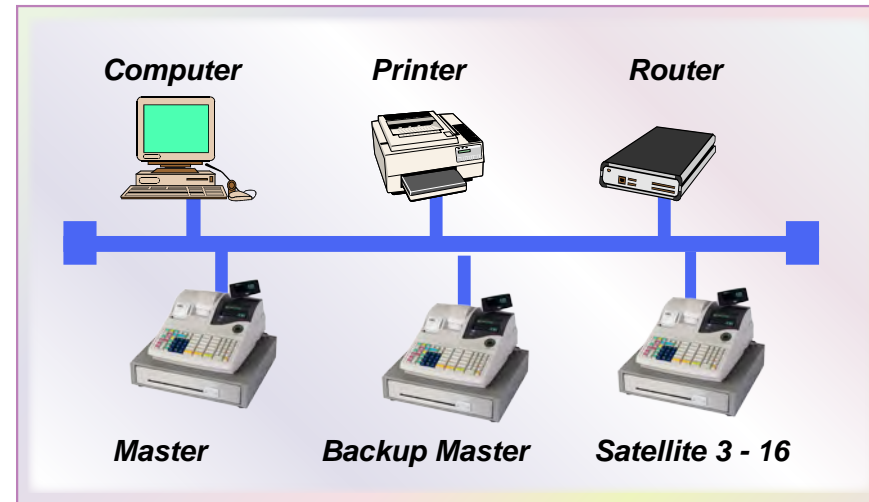
- Scale status for department and PLU
- Tare Table Programming
- Manual scale entry

## Cashier Accountability

- Cashier name up to 12 characters
- Flexible cashier number entry
- 15 cashiers standard (99 maximum)
- Training mode
- Drawer assignment for each cashier (up to 2)
- Full Accountability report
- Floating Cashier

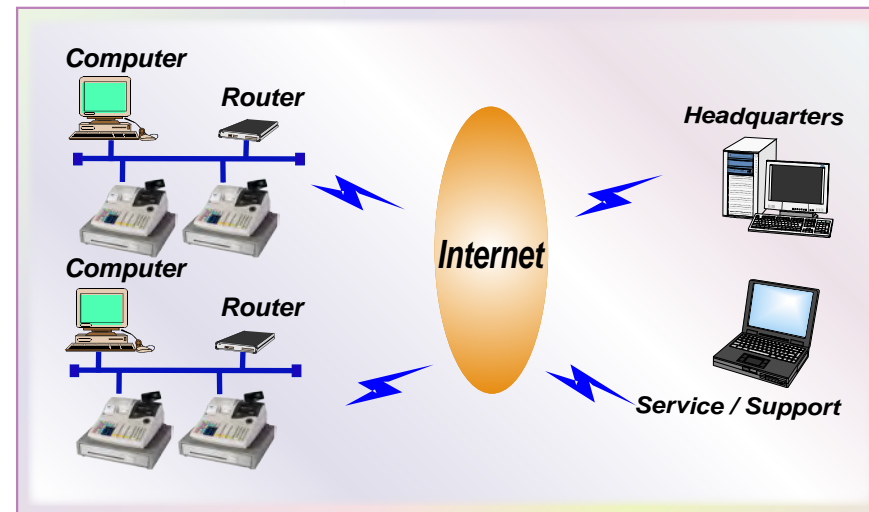
## High-Speed LAN Communications (Standard)

- PC connection via LAN (TCP/IP)
- Master/backup master configuration
- Up to 16 terminals



## Internet Communications

- Communicate seamlessly to a main office through the internet



## ymphony™ Back Office Software

- Full inventory control
- File maintenance
- Reporting
- Multi-store hosting

## High Quality Thermal Printer

- 58mm paper width
- 20 line/second print speed
- Silent thermal (receipt/journal)
- Journal condense print option
- Clam shell design for easy paper loading (Drop 'n Load)
- Automatic receipt cut
- Graphic logo print function



## Front Display

- 16 character dot-matrix
- Alpha-numeric
- 10 digit, 7 segment
- Scrolling message up to 64 characters

## Customer Display

- 10 digit, 7 segment
- Swivel



## User-friendly Keyboard

- 90 key raised keyboard or 120 key full flat keyboard
- External PLU keyboard (PK-2) available
- Fully programmable keyboard



## Financial Report

TEC  
MA-188 Electronic Cash Register

03-01-2004 MON #0

X\_FINANCIAL

GT	86.00
NET GT	52.90
ES	30
NS	86.00
NS	33
NS	33
TOTAL	52.90
CASH	420
CHECK	95.90
Chw	100
CREDIT 1	3.00
CASH 10	3.00
CHECK 10	1
Chw 10	11.00
Chw 10	3.00
CR1 101	1
ALL 10	3.00
1	2.00
*	0.10
DISC	1.00
RIN	1
-SALE	10.00
100	10.00
100	3.67
NO /OUS	5.88
NO SALE	1
HOLD CTR	2

0031 14:257M

### Cash Drawer

- Sturdy metal construction
- Stainless steel front with media slot
- Manual release lock
- Five bill / five coin compartments

### Feature Rich (Standard)

- Three RS-232 ports
- Cancel transaction key w/50 item buffers
- Four tax rates
- Ten media keys for tender
- Triple multiplication for item entry
- Ten auto-function keys
- Two percentage discounts
- Two selective itemizers
- Other income department (hash)
- Sales % of department
- Salespersons change during a transaction
- Customer charge file
- Link PLU
- Media pick-up warning
- Drawer open warning time setting
- Forced birthday verification
- Coupon entry
- Post receipt
- Hold and Recall
- Negative check file
- Data capture
- Bottle deposit
- Compulsory validation by department and media via slip printer

### Peripherals

- Secondary drawer
- PK-2 external PLU keyboard
- Slip printer
- Scale
- Scanner
- EFT Terminal

### Options

- 4M Memory Board

Management Report		X	Z	GTX	GTZ
Combination report		*	*		
Financial report		*	*	*	*
Cashier report	All	*	*	*	*
	Individual	*	*	*	*
Sales person report		*	*		
Credit card sales report		*	*		
Department report	Gross Profit	*	-	*	*
	All	*	*		
	Individual	*	-	*	*
Group Report		*	-		
Media sales & in-drawer total		*	-		
Hourly report		*	*		
All media sales & in-drawer total		*	-		
PLU	All	*	*	*	*
	Zone	*	*	*	*
	Individual	*	-	*	*
Customer (check track) file report	All	*	-	*	*
	Individual	*	-	*	*
	Non-active	*	-	*	*
	Debit balance	*	-	*	*
	Credit balance	*	-	*	*
PLU group report	Zone	*	-	-	-
		*	-	-	-

### RAM Allocation

	Standard RAM	With Extended Memory (MAX)
PLU (Local)	1,500	-
PLU (Central)	5,000	65,000
Cashier (Local)	15	-
Cashier (Central)	-	99
Customer File (Local)	1,000	-
Customer File (Central)	-	3,000
Data capture	-	65,000
Departments	99	-
Department major groups	10	-
Department groups	30	-
PLU groups	99	-
Negative Check File	-	3,000
Salespersons	99	-
Hourly ranges	24	-
Media	10	-

### Specifications

Dimensions - 410 mm width X 430 mm depth X 346 mm height  
 Weight - 14.0 kg  
 Power required - AC 117V + 10%; 50/60 Hz  
 Power Consumed - 0.6 A @ 117V  
 Ambient Temperature- 0 degrees C to 40 degrees C, 10% to 90% relative humidity  
 Size of Receipt and Journal Tape - 58 mm width X max. 80 mm diameter

*All company and/or product names are trademarks and/or registered trademarks of their respective owners. All features and specifications described in this brochure are subject to change without notice.*

## TOSHIBA

### TOSHIBA TEC AMERICA

4401-A Bankers Circle  
 Atlanta, GA 30360  
 U.S.A.  
 Phone: 770-449-3040  
 Fax: 770-449-1152  
 Website: www.toshibatecusa.com

### TOSHIBA TEC CANADA

370 Britannia Road East, Units 1 & 2  
 Mississauga, Ontario L4Z 1X9  
 Canada  
 Phone: 905-890-8283  
 Fax: 905-890-0082  
 Website: www.toshibateccanada.com