

**TOWA**

With Superior design and X-tra value,  
SX-680 offers a flexible system

**SX-680**

**TOWA**

With Superior design and X-tra value,  
SX-680 provides the answer for today's management

**SX-680**



Flat Keyboard version  
(shown without Cash Drawer)



Raised Keyboard version available

Report Sample

For Better  
Business Control



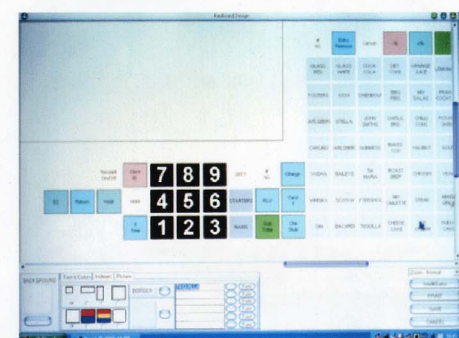
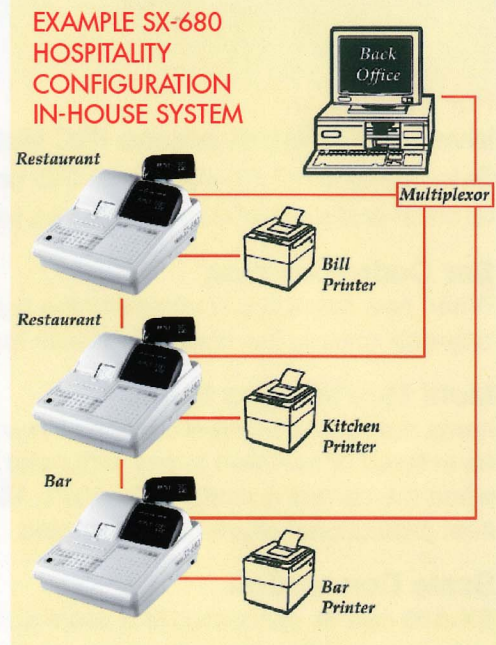
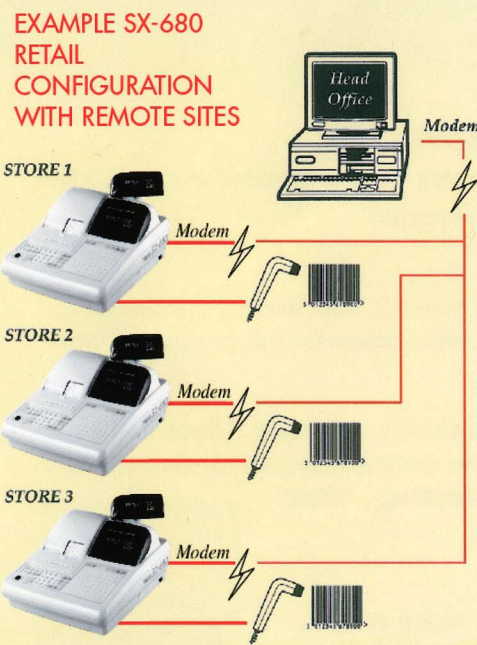
\*\*\* X 1 \*\*\*  
FULL REPORT

GROCERY	350
78.37%	161.57
LIQUOR	40
6.30%	13.00
MAGAZINES	10
5.09%	10.50
FRUITS	12.76KG
10.22%	21.07
SHIFT 1	12.76KG
400	206.14
DEPT TTL	12.76KG
400	206.14

CARD*	
CAID	192.28
CARD2	39.12
COUPON T	60
	12.00

RPRT CNT 0007	
NRGT	2,296.83

MARY	9N
NET TL	231.40
TAX	25.26
NET *	206.14
CAID	192.28
CARD2	39.12
12:18 PM	MARY
0010 01	23-06-2005



**TOWA Programming Utility Software**  
simplifies setting up the ECR, main-  
taining product and price changes etc.  
Your dealer can advise you about availa-  
bility of the software.



SX-680RK with N26 Drawer

Item	Descriptions
Dimensions	Body : 350 (width) x 429 (depth) x 188 mm (height) (254mm height when customer display is pulled up) Drawer : 410 (w) x 415 (d) x 114 mm (h)
Weight	Body : 6.6 kgs (14.5 lbs) , Drawer : 6.4 kgs (14.1 lbs)
Power source	117V/220V/230V/240V, AC ± 10%
Power consumption	Maximum 38W
Ambient operating temp.	0°C - 40°C (30°F - 104°F)
Memory	CMOS-RAM
Memory back-up time	Approx. 500 hours
Printer	Thermal 58mm printer x 2
Printing speed	Approx. 13 lines per second
Paper roll	Width : 58mm (2.2 inches) Max. diameter : 70mm (2.7 inches)

Default Maximums*	Descriptions
	Department : 299 (99 x 3 levels) PLUs : 1,500** Cashier : 20 Clerks : 50 Guest check without retained memory : 200

\*Maximum parameter can be changed in accordance with users requirement.  
\*\*8,000 PLUs without guest check.  
20,000 PLU version available as factory option.

Sold and Serviced by:

**TOWA MECCS CORPORATION**  
5-5, Hongo 3-chome, Bunkyo-ku, Tokyo 113-0033, Japan  
Tel: 81-3-5684-5681 Fax: 81-3-5684-5791  
<http://www.towa-meccs.com>

The information given in this leaflet is subject to change without notice and does not represent a commitment on the part of TOWA MECCS CORPORATION



## Stylish Good Looks plus Powerful, Reliable Performance

Easy to Use at the Point of Sale

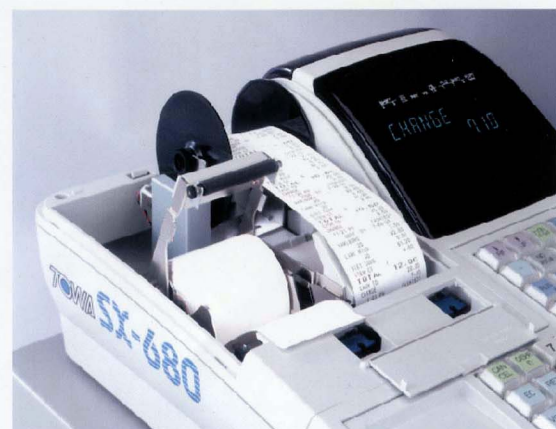
Compact, Low Profile, Small Footprint

Loaded with Highly Desirable Features for Hospitality and Retailing



Two-line alpha/numeric display for operator and customer sides.

Alpha display helps the operator to view the items as they are registered. Customers can supervise the transactions as they are processed.



'Drop-in' paper loading mechanism helps users to change paper instantly.

### Main Hardware Features:

- Choice of Flat or Raised Button Keyboard
- Heavy-duty 58mm x 2 Thermal Printers in 'Drop-in' Paper-loading Mechanism
- N26 Heavy-duty (4.5 or 6 Bills/6 or 8 Coins Compartment) Drawer with 1.5 meters cable (can be remotely sited)
- 2-line Alpha and Numeric Displays for Operator and Customer
- 3 x RS232C Ports for PC, Scanner, Kitchen/Slip Printers and Scale connection
- 2 x IRC ports for up to 8 Master-Satellite connection



### Main Software Features:

- Inter Register Communication for up to 8 ECRs
- 8,000 standard PLUs (optionally 20,000 PLUs version available)
- Floating Guest and Memory Billing
- Floating Server
- Table Transfer/Split Bill
- Happy-hour with auto price change by time
- External guest check printer
- Customized Graphic Logo Loading
- Bar code 'Learning'
- Euro/Foreign Currency Conversion (up to 5 FCs)
- Built-in Simple Inventory Control Function
- Multi Buy/Mix and Match
- Loyalty Points and Coupon
- Lottery and Numbered Ticket Issue
- Macro Key (64 Macro keys, a macro key can replace up to 8 key steps)
- PC, Scanner, Kitchen/Bill Printer and Scale connection
- Promotion Items (up to 8 promotional items per clerk)
- 99 Condiments

# SX-680

### For Retailers:

#### Inventory Control across IRC Network

Sales made on all SX-680s in an IRC network can be updated in the master terminal and stock of each article can be reported.

#### Bar Code 'Learning'

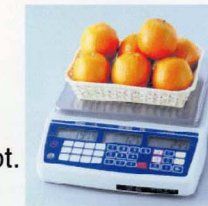
When new items are scanned for the first time SX-680 'learns' the barcode, requests entry of the price and stores the information for future recognition.

#### Multi Buy/Mix and Match

Items may be discounted when a certain quantity is bought. These items can be entered or scanned in any order and the discount deducted automatically when the correct quantity is reached. Alternatively, mixed item promotional offers can be created.

#### Scale Connection

SX-680 can be connected to a scale so that the weight, unit price and its total amount can be printed on the receipt.



#### Loyalty Point Incentive

SX-680 updates customers' loyalty points totals when they make purchases.



### Receipt Sample



### OPENING SALE GIFT FOR 100 LOYALTY POINTS

1.5L COKE I	2.85
SPRITE I	0.90
6*BUDWEISER I	14.40
1.235KG	@1.45
ORANGE I	1.79
TXBL-1	19.94
TAX-1	2.44
ITEM CT	4
<b>TOTAL</b>	<b>22.38</b>
CASH TD	25.00
CHANGE	2.62
3:10 PM	GEORGE
0079 02	14-05-2006
<b>** POINT RECEIPT **</b>	
POINT TL	19
POINT GT	61
VALID THRU 30-06-2006	

### Silent alpha-numeric printing plus graphic logo

The noiseless 16 digit alpha-numeric printer operates at the speed of 13 lines per second. Your company logo or special design can be stored in the SX-680 memory and printed on each receipt.



### For Hospitality:

#### Table Management

Orders may be stored and recalled as additional items are ordered. Bills can be issued on the integral 58mm printer or optionally on a wide bill printer.

#### Table Transfer/Split Bill

Customers at a table can split the bill or transfer the bill to another table if joining friends. Drinks served in the bar can be transferred to the customer's table in the restaurant.

#### Floating Server

Servers may start or finalise food and drinks orders on any SX-680 in the system, avoiding queues at the registers and speeding food and drinks orders to kitchen and bar.

#### Happy Hour

Prices of items can shift automatically by time zone for special offers.